

## ENDÜSTRİYEL BRÜLÖRLER INDUSTRIAL BURNERS

*The "Raysel" industrial burners have been manufactured since 1986 in Selnikel premises under the license of German "Ray Öl-und Gasbrenner GmbH" company.*

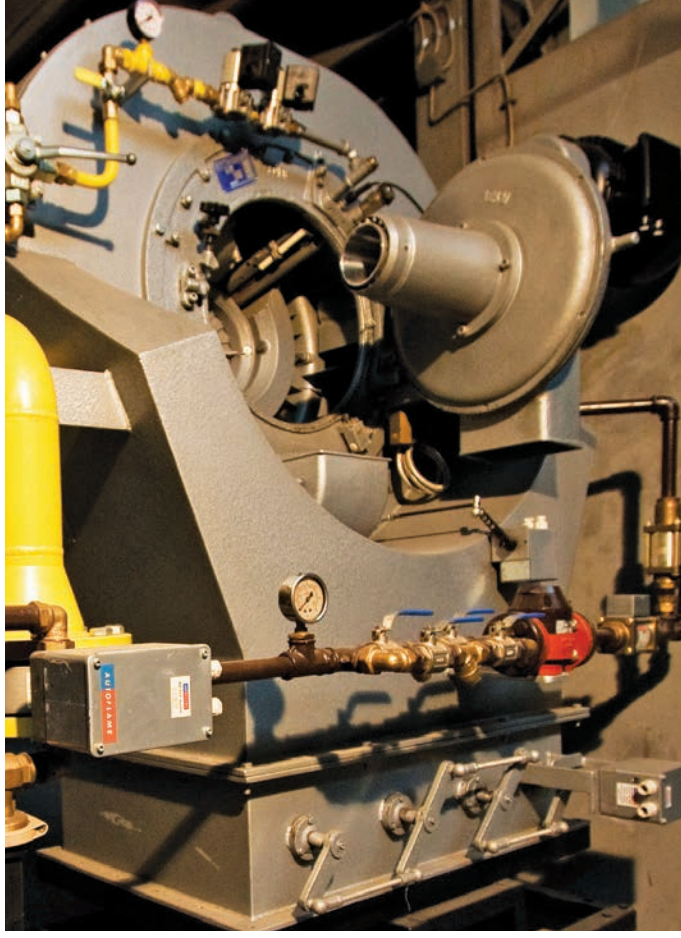
"Raysel" endüstriyel brülörleri, Alman "Ray Öl-und Gasbrenner GmbH" firması lisansı ile 1986 yılından beri Selnikel tesislerinde üretilmektedir.

- Gas Burners •
- Oil Burners •
- Gas / Oil Burners •

- Gaz Yakıtlı Brülörler •
- Sıvı Yakıtlı Brülörler •
- Gaz / Sıvı Yakıtlı Brülörler •

# ENDÜSTRİYEL BRÜLÖRLER

Industrial Burners



## Özellikler:

- Yüksek Verim
- Uzun Ömür
- Güvenli İşletme
- Üstün Kalite
- Geniş Kapasite Aralığı (0,29 MW - 29 MW)
- İşletme Yüküne Tam Uyum
- Yüksek Kıasma Oranı
- Elektronik Kontrol
- Tam Oransal
- Çevreyle Dost

## Features:

- High Efficiency
- Long Life
- Safe Operation
- High Quality
- Wide Capacity Range (0,29 MW - 29 MW)
- Full Compatibility With the Load
- High Turndown Ratio
- Electronic Control
- Fully Modulating
- Environment Friendly

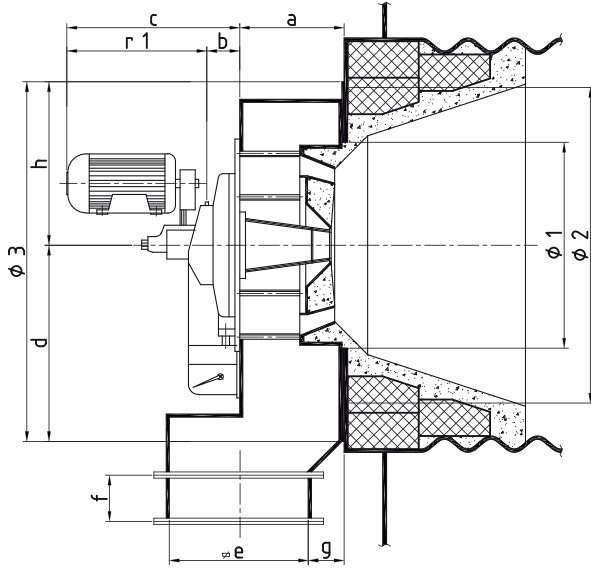
## Kapasite Diagramı / Capacity Diagram

Tip / Type (BGE / BGEC / EG)	Brülör Kapasitesi / Burner Capacity		1 kW = 860 kcal 1 Gcal = 1.000.000 kcal
	Gcal / h	(kW / h)	
150	0.25 - 1.50	(290-1744)	
250	0.4 - 2.50	(465-2907)	
350	0.55 - 3.50	(639-4070)	
500	0.80 - 5.0	(930-5814)	
600	1.0 - 6.0	(1162-6977)	
700	1.15 - 7.0	(1337-8140)	
800	1.30 - 8.0	(1511-9302)	
1000	1.60 - 10.0	(1860-11628)	
1250	1.60 - 12.50	(1860-14535)	
1500	1.90 - 16.0	(2209-18605)	
2000	2.50 - 20.0	(2906-23256)	
2500	3.10 - 25.0	(3604-29070)	

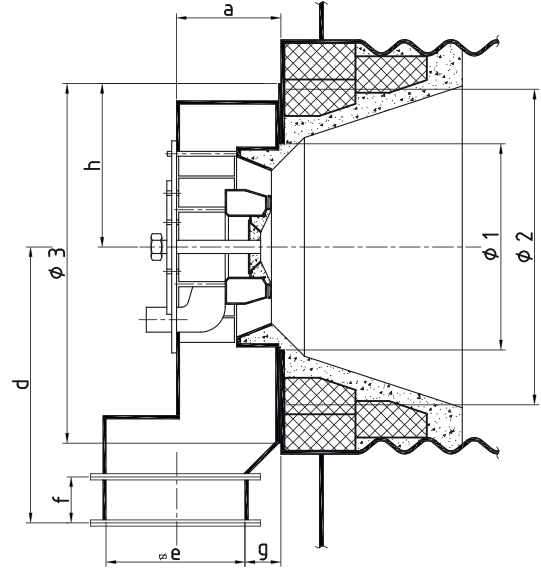
# ENDÜSTRİYEL BRÜLÖR

## BOYUTLARI

Dimensions of Industrial Burners



**BGE / BGEC**  
Sıvı Yakıtlı / Gaz-Sıvı Yakıtlı  
Oil / Gas-Oil Burners



**EG**  
Gaz Yakıtlı  
Gas Burners

### BGE / BGEC

Type	150	250	350	500	600	700	800	1000	1250	1500	2000	2500
a	195	195	195	254	254	254	334	334	334	334	400	400
b	70	70	70	76	76	76	76	76	76	76	73	73
c	520	520	520	520	540	540	580	580	580	580	350	350
d	670	670	670	740	740	740	890	890	910	1040	1140	1140
e	270/477	270/477	270/477	350/498	350/498	350/498	420/598	420/598	474/700	550/900	550/900	550/1050
f	160	160	160	160	160	160	160	160	180	240	240	240
g	100	100	100	100	100	100	100	100	100	100	140	140
h	378	378	378	470	470	470	480	480	480	550	650	710
r1	580	580	580	580	600	600	660	660	660	660	600	600
ø1	560	560	560	670	670	670	670	670	670	670	775	775
ø2	700	700	700	1040	1040	1040	1040	1040	1040	1040	1100	1320
ø3	884	884	884	1120	1120	1120	1250	1250	1350	1350	1550	1670

### EG

Type	150	250	350	500	600	700	800	1000	1250	1500	2000	2500
a	195	195	195	254	254	254	334	334	334	334	400	400
d	670	670	670	740	740	740	890	890	910	1040	1140	1140
e	270/477	270/477	270/477	350/498	350/498	350/498	420/598	420/598	474/700	550/900	550/900	550/1050
f	160	160	160	160	160	160	160	160	180	240	240	240
g	100	100	100	100	100	100	100	100	100	100	140	140
h	378	378	378	470	470	470	480	480	480	550	650	710
ø1	560	560	560	670	670	670	670	670	670	670	775	775
ø2	700	700	700	1040	1040	1040	1040	1040	1040	1040	1100	1320
ø3	884	884	884	1120	1120	1120	1250	1250	1350	1350	1550	1670



[www.selnikel.com](http://www.selnikel.com)

**Genel Merkez & Fabrika**

T : +90 312 328 85 47  
F : +90 312 328 85 63  
@ : [info@selnikel.com.tr](mailto:info@selnikel.com.tr)

**Marmara Bölge**

T : +90 212 244 48 08  
F : +90 212 252 91 41  
@ : [istanbul@selnikel.com.tr](mailto:istanbul@selnikel.com.tr)

selnikel  
selnikel  
selnikelcom

